

Narwee Public School

61 – 65 Broad Arrow Rd, Narwee, 2209
T: 9153 9756 / 9153 5578
E: narwee-p.school@det.nsw.edu.au
W: www.narweeps.com.au



Term 1 – Week 8

Wednesday 18 March 2020

Principal's Report

I have asked all teachers to give new log-in details to any families who are not on ClassDojo. We use this platform to reach our community quickly for up-to-date messages and information. With recent health alerts, it's most important that we reach you this way. Please take the time to register with the ClassDojo phone app if you haven't already done so.

We have cancelled our Parent Teacher interviews for this term. If you have concerns in regards to your child's progress, please contact the school and we will arrange a phone interview for you and the class teacher.

As we have cancelled our school events, if your child has already paid they will receive a credit to be held against their name for future use.

Our Home Reading helpers are busy each week helping your child return their home readers and choosing new ones. Reading together and listening to your child read is a good way to make connections and share experiences. Happy reading!

We have included a copy of the Community Charter with the notes being sent home today which outlines our responsibilities to make sure our school environment is collaborative, supportive and cohesive. Please take a moment to read this important document.

Purple Day, held yesterday on 17 March, was a solemn and heartfelt day where we honoured our former school captain, Lioni Havili by wearing her favourite colour purple and collecting funds for the Lupus Foundation. I acknowledge Mrs Lennon for raising awareness about how to help others.

Our first P&C meeting for the year was held last week and I would like to congratulate the new leaders. Mrs Szirt has taken up the role of President, Mrs Algumaili is the Vice President, Ms Corbett is the Secretary and Mr Koletti will be the Treasurer for another year. We will meet in Week 2 at 2.30pm and in Week 7 at 7.00pm each term to discuss school business including fundraising and supporting learning at our school. The next meeting will be held on Wednesday 6 May at 7.00pm.

Congratulations to Jannah, Hussien, Leo and Legion for their sporting achievements. They have made it into the Sydney East sporting competition.

Rosemary Monin – Principal

Year 6 News

An Expression of Interest form is required for all Year 6 students for high school placement for 2021.

All parents are asked to complete the form and return it to the school before Friday 20 March.

Please note the Expression of Interest form must be completed for ALL students including those who have applied for placement in a non-government school. If this is the case, and you have been granted a place, please complete Section E – Placement not required.

For those parents intending to apply for a placement at a non-local government school, please read the requirements carefully and consult with the high school if unsure. You will need to thoroughly outline your reasons for seeking non-local placement and many high schools also require you to provide supporting evidence and documentation. If you have any queries about completing the Expression of Interest please speak to your child's class teacher.

School Uniform Donations

Pre-loved school uniforms can be donated to the school if your child has grown out of them. Please drop them in to the school office. All donations are gratefully accepted.

School Calendar

Upcoming Events at Narwee Public School
Please put these dates in your diary.

Term 1 Week 11 2020

Thursday 9 April

Acknowledgement Day

Thursday 9 April

Last Day of Term

Upcoming
EVENTS

Awards

Congratulations to the following students who received awards at our last assembly.

Gunn (1/2I)	Jasim (1/2I)
Johanna (1/2I)	Amber (1/2I)
Lana (1/2I)	Charlie (1/2I)
Chloe (1/2M)	Hasset (1/2M)
Youssef (3/4L)	Sarah (3/4L)
JD (3/4L)	Lot (3/4L)
Mia (3/4L)	Zahraa (3/4L)
Blake (3/4H)	Alexis (3/4H)
Milly (3/4H)	Evelyn (4/5S)
Guillermo (4/5S)	Summer (4/5S)
Dylan (4/5S)	Anthony (4/5S)
Innaz (4/5S)	Bert (3/4H)
Kayci (3/4H)	Jolie (1/2S)
Angelique (1/2S)	Devina (1/2S)
Jlnar (1/2S)	Christian (1/2S)
Jackson (1/2S)	Chanel (5/6F)
Teoka (5/6F)	Basayr (5/6F)
Bianca (5/6F)	Ellakay (5/6F)
Petrelia (5/6F)	Ivan (KO)
Ajae (KO)	Christopher (KO)
Aaliyah (KO)	Hassan (KO)
Maddison (K/1P)	Joseph (K/1P)
Sofia (K/1P)	Zayn (K/1P)
Philip (K/1P)	Evelyn (3/4M)
Adina (3/4M)	Talia (3/4M)
Noah (3/4M)	Jaafar (3/4M)
Oyu (3/4M)	Losi (KM)
Royce (KM)	Moana (KM)
Charley (KM)	Aria (KM)
Dylan (5/6R)	Ishan (5/6R)
Helen (5/6R)	Jannah (5/6R)
Muhammed (5/6R)	Isabel (5/6R)

Madhi (5/6K)

Amy (5/6K)

Axel (5/6K)

Jayda (5/6K)

Jireh (5/6K)

Man (5/6K)

PBL News

Our PBL focus for Week 8 and 9 are listed below.
Remember to be a Safe, Respectful and Active Learner at all times.

Week 8 – Playground Cola K-2

Be Safe	<ul style="list-style-type: none"> Always walk Play sit down games
Be Respectful	<ul style="list-style-type: none"> Put rubbish in correct bins Value all property
Be an Active Learner	<ul style="list-style-type: none"> Agree on and follow game rules Use the No,Go,Tell strategy

Week 8 – Playground Asphalt 3-6

Be Safe	<ul style="list-style-type: none"> Wear a hat properly Stay in bounds Always walk
Be Respectful	<ul style="list-style-type: none"> Put rubbish in correct bins Use kind words and actions Invite other to play Be considerate of other games Value all property
Be an Active Learner	<ul style="list-style-type: none"> Agree on and follow game rules Remain calm and talk through problems Use the No,Go,Tell strategy

Week 9 – Outdoor Assembly

Be Safe	<ul style="list-style-type: none"> Line up sensibly Follow rules and instructions Stand quietly
Be Respectful	<ul style="list-style-type: none"> Be punctual
Be an Active Learner	<ul style="list-style-type: none"> Listen

Important School News

A letter was sent home with all students on Monday to keep parents up to date with the response to current health alerts and changes taking place at Narwee Public School.

Along with all public schools we have cancelled all outdoor and indoor assemblies, all gatherings including PSSA, our Family Harmony Day concert and workshops, our Easter Hat Parade and our face to face Parent Teacher interviews.

Students will still have their sausage sizzle lunch on the Family Harmony Day and Easter Hat Parade days and the canteen will refund extra orders for family members. We will not make Easter hats or 'eggs on legs'.

In our classrooms, teachers are:

- Ventilating the rooms – opening the windows and having cross ventilation.
- Making sure students drink water regularly
- Supervising regular hand washing inside the classroom, especially before and after eating & when returning from breaks.
- Using paper towels to dry hands.
- Separating student desks so they are not facing each other.
- Doing individual work, not group work.
- At the end of the day – leaving clear tables so cleaners can wipe down hard surfaces.
- Making sure our students can log on to and use online platforms including Soundwaves, Mathletics and Google Classroom as part of their learning.

The school website has a tab on the front page with links to the Department of Education:

<https://education.nsw.gov.au/public-schools/school-safety/novel-coronavirus>

For the latest updates from NSW Health website:

<https://www.health.nsw.gov.au>

NAPLAN

NAPLAN (National Assessment Program – Literacy and Numeracy) will take place for all students in Years 3 and 5. The dates for NAPLAN assessments are:

- Language Conventions & Writing – Tuesday 12 May
- Reading – Wednesday 13 May
- Numeracy – Thursday 14 May
- Catch-up Day – Friday 15 May

Behaviour Levels System

Our Behaviour Levels System has been carefully designed based on rewards and consequences and is intended to make students responsible for their own actions and behaviours. It is a very fair system which sets out clear guidelines indicating what can be expected to happen at each level.

Each student starts on Bronze Level with the aim of reaching GOLD Level with demonstrated good behaviour. Poor behaviours will result in students dropping down levels to 4, 5 or even 6, with appropriate consequences.

This is how the process works:

1. All staff meet in Weeks 3, 6 and 9 and each child's name is read out with the level that their teacher believes they should be placed.
2. Any staff member who objects to this level speaks up.
3. The child's behaviour is discussed until everyone agrees on the level of the child.

Students may move down a level at any time if they display poor behaviours. The class teacher will issue a purple form to be sent home to the parents informing them of this. If a student is placed on detention parents are notified by receiving a pink detention note. These notes must be signed by a parent and returned to the school the following day.

In Week 6 all teachers were involved in the behaviour levelling process. The good news is that the majority of our students have had a terrific start to the year and are behaving well.

Most students remained on Bronze Level and 3% moved to Silver Level at this meeting. One student has been moved to below Bronze Level and a number of students have been mentored during the lunch break to help improve their behaviour. It is hoped that these students will learn a valuable lesson and will be able to improve their behaviour and attitude for the remainder of the year.

Don't forget to show an interest in your child's level and ask frequently what level they are on and offer advice on how this can be improved or maintained.

Please see the Gold Level students note sent home today with all students. This is the criteria which we use to promote students to Gold Level.

Cathie Berrett – Assistant Principal

School Security

Please help keep our school safe

If you see anything unusual happening in the school grounds at any time, please call School Security on

1300 880 021

School Vice Captains

Gabe



Greetings! My name is Gabe and I am your 2020 School Prefect. I really enjoy drawing and reading books by Anh Do and many more. My favourite sports are hockey, cricket and newcombe ball. I am truly looking forward to this year. Happy to serve!

Christian



Hi my name is Christian and I am your Prefect for 2020 at Narwee Public School. In class I enjoy many subjects like art, science and geography. I do choir, PSSA, library monitor, SRC and other great things. I am very grateful for this position and I cannot wait to see how this year will be.

Kindergarten Helpful Hint

Parents with a child in Kindergarten – it is advisable to pack a spare change of underwear in your child's school bag. Kindergarten children often become so engrossed in their play or activities and sometimes forget to stop for a toilet break. Others just don't make it in time.

Although we have a very small supply of underwear, it is much better for your child if they have their own to change into. If your child has an accident at school and comes home in school underwear or clothes we ask that these are washed and returned to school at your earliest convenience.

Student Safety

We remind all parents that our younger students should be escorted into the school grounds in the mornings and should not be asked to walk to parked vehicles or to walk beyond the school grounds without an adult at the end of the school day.

The pedestrian crossing entrance is the appropriate point of entry and exit to and from the school. We ask the car park not be used as a pedestrian area. These rules are in place to keep everyone safe. Your support in adhering to these reminders is appreciated.

School Notes

Just a reminder that all notes sent home with payment or signature requests have a closing date.

Additional time chasing these notes up by teachers and office staff takes up much of our teaching and administration time. Please take the time to read notes and adhere to the closing dates.

Important Notice

From time to time issues or disagreements may occur between students. It is the responsibility of school staff to deal with these matters. We ask that all parents/carers bring any matters to the attention of a staff member rather than approaching students and discussing matters directly with them.

School Starting Time

Parents are reminded that teachers are not on duty until **8.50am** each morning. Some students are arriving as early as 8.15am and are left unsupervised in the playground. If your child is at school before 8.50am they need to be supervised by an adult for safety reasons.

If you are unable to supervise your child before this time you will need to organise a friend, neighbour etc to look after your child.

Alternatively, we have Before & After School Care onsite where you can register your child. For more information, contact 3 Bridges on **9580 0688**.

Please do not leave your child unsupervised

Contact Details

Have you changed your contact details?

It is important that the school has up to date contact details in the event that your child becomes ill at school. Children often become distressed when we are unable to contact their parents.

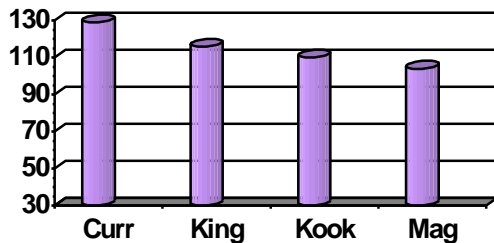
We ask that all parents notify the office if any of your details have changed. Your assistance in this matter is much appreciated.

**UPDATE YOUR
DETAILS**

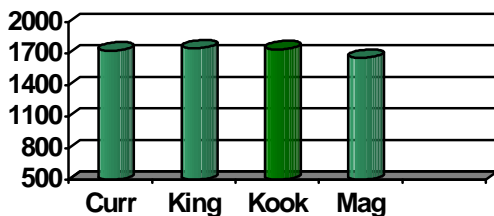


House Points & Uniform Spot Check Points

HOUSE POINTS



UNIFORM SPOT CHECK



Extended Leave

Parents were previously able to apply for attendance exemption for their child/children to travel during school terms. Exemptions are no longer provided for travel. Families are strongly encouraged to travel in school holiday periods.

If travel within the school term is unavoidable, please see the office as an 'Application for Extended Leave – Travel' form may need to be submitted. When the application is accepted, parents will be provided with a 'Certificate of Extended Leave' to take with them when they travel.

Easter Egg Donations

In Week 11, we will be donating Easter eggs to residents of two local nursing homes.

We would appreciate it if your family could donate eggs for the nursing home residents. The eggs only need to be the size of a chicken egg. The eggs can be handed into the office each morning.

Each donation will receive a raffle ticket and have a chance of winning a prize.

We need Easter Egg Donations!



Opal Card Information

All students at Narwee Public School need to have their own green child/youth Opal Card for any excursion where travel is by train.

The option of using public transport for appropriate excursions helps keep the excursion cost down for all students and families involved.

Students are not able to use their school travel Opal Card as this card is for travel to and from school only.

There are two ways to organise an Opal Card for your child - either online or in person. Please be mindful that your child will need a child/youth Opal Card which is green in colour.

Online: Cards can be purchased online and topped up online as well by calling 13 67 25 or via the following link: www.opal.com.au/get-an-opal-card

In Person: You can purchase and top up Opal Cards from most newsagencies and petrol stations. Local places in Narwee to purchase Opal Cards are:

- **Narwee Newsagency** – 159 Peshurst Rd Narwee, NSW 2209
- **Broad Arrow Newsagency** – 66 Broad Arrow Rd Narwee, 2209
- **7-Eleven Narwee** – 161 Peshurst Rd Narwee, NSW 2209

Please contact the Opal Card hotline on 13 67 25 for assistance or if you have any enquires.

Recycling

Help raise funds for our school by placing your recyclable cans/bottles in the bin provided on 'A' Block near the doors into the office.

Look for the "Recycle Here" sign

All funds raised by the can/bottles that are recycled will go towards the purchase of school resources.



Notes & Payments Due

Please ensure all permission notes / payments are returned to school by the following closing dates:

- **Year 6 High School Expression of Interest** form due back by **Friday 20 March**
- **Issue 2 Book Club** order form and payment due back by **Friday 20 March**

Please note that copies of all notes and newsletters are available on the Narwee Public School website if you need to re-print them.



Book Club

Issue 2 of Book Club has been sent home with all students.

If you would like to place an order please ensure all order forms are filled out correctly with your child's name and class printed on the top of the form and the correct money is placed in an envelope or zip lock bag and handed to your child's class teacher before the closing date. Alternatively, you can order through the LOOP system on the Scholastic website. The books should arrive approximately 10 days after the closing date.

Morning and Afternoon Parking

Please park in the appropriate street spaces along Broad Arrow Rd, Mountview Ave or Chamberlain St. Take note and comply with the 'No Stopping' and 'Bus Zone' areas near the school and keep our driveway clear. The first area of parking in front of the school is the 'Kiss and Drop' zone. In this area drivers may stop to drop off or pick up children however 'No Parking' rules apply.

- Maximum stop time is 2 minutes
- Driver must remain in or within 3 metres of the vehicle
- Vehicle must not be left unattended.

The police and rangers patrol the school regularly. Fines can be quite expensive for parking illegally around a school.

Anaphylaxis

A number of students at our school are highly allergic to some foods, particularly nuts. These students are at risk of an anaphylactic reaction if they come into contact with nuts through ingestion or touch. These reactions can be sudden, severe and can be life threatening. Our students have emergency health care plans which include the use of epipens. All staff members participate in anaphylaxis training to increase their understanding of the condition. They are also trained in the use of epipens.

Students with allergic reactions are very aware that they cannot eat any food other than what is provided by their parents. All families are reminded of the importance of assisting the school with minimising contact with nuts and in particular peanuts, by not sending food to school which contains nut products. Please remind your child not to share food.

School Photos

Photo Day is on Wednesday 1 April. Payment envelopes have been sent home with all students.

At this stage school photos will go ahead. Parents will be notified as it gets closer to the date if this changes.



Safe School Travel

Children are vulnerable road users. They are at risk in the traffic environment because of their size, their difficulty in judging speed and distance and the fact that they may behave unpredictably.

More than one million children in NSW travel to and from school each day by car, bike, public transport or as a pedestrian.

Each form of transport poses potential hazards. The RTA has in place 40km school zones and also funds a Road Safety Education program in NSW schools. This alone is not enough – you can help by following some simple safety steps and by regularly reinforcing important road safety messages with your child.

- Always make sure your children wear a seat belt when travelling in a car – about 50% of child road casualties aged 5-14 are passengers in a car.
- Make sure children use the footpath-side door when getting in and out of a car.
- Never call your child from across the road.
- Use a pedestrian crossing where possible.

Homework Club

Come and join us for an afternoon of homework support, games, Bible stories and afternoon tea.

When: Mondays from 4.00 – 5.30pm

Who: Kindergarten to Year 6

Cost \$2.00

For more information:

Robyn Garlick – Children's Youth Pastor

Narwee Baptist Church

33-39 Baumans Rd, Peakhurst

M: 0412 475 044

E: robyn@narweebaptist.org.au

P&C News

Hi everyone, we now have an active P&C committee for 2020! One of the roles for the year is to raise money for the school. Our first fundraiser for the year is the Mother's Day raffle which will be drawn in the week prior to Mother's Day.

Currently we are gathering prizes and would appreciate any suitable new donations that can be handed into the front office.

Raffle tickets will be going on sale next week.

P&C Committee

